

# Brake Quip

BQAP-1013

**INNOVATIVE SOLUTIONS FOR AUTOMOTIVE TUBES AND HOSES**

## The One Stop Shop for Automotive Tubes and Hoses

AUTOMOTIVE PLUMBING CATALOG  
\$2.00 USA



**Lab Tested - Tuff!**

TM

[www.brakequip.com](http://www.brakequip.com)

### Table of Contents

|                                    |       |
|------------------------------------|-------|
| Fittings.....                      | 1-6   |
| Tube Nuts.....                     | 1     |
| Stainless Steel Tube Nuts.....     | 2     |
| Male / Female Thread Adapters..... | 2     |
| Bump Tube Adapters.....            | 2     |
| Female Tube Joiners.....           | 3     |
| Male Test Adapters.....            | 3     |
| Bleed Screws.....                  | 3     |
| Bulkhead Nuts.....                 | 4     |
| Banjo Unions & Adapters.....       | 4     |
| Copper Washers.....                | 4     |
| Banjo Bolts.....                   | 5     |
| Fitting Plugs.....                 | 5     |
| Weld On Banjo Heads.....           | 5     |
| 3-Way Tube Tees.....               | 6     |
| Aluminum Weld On Fittings.....     | 6     |
| Stainless Steel Fittings.....      | 6     |
| Misc Fittings.....                 | 7     |
| Assortment Kits.....               | 8     |
| Fuel Lines.....                    | 9-11  |
| Hoses.....                         | 12    |
| Tubing.....                        | 13    |
| Flaring Tools.....                 | 14    |
| Tools.....                         | 15-16 |
| Miscellaneous.....                 | 16    |
| Thread Gauge Kit.....              | 17    |
| Programs.....                      | 18    |
| Systems.....                       | 19    |

©Copyright 2013

## Tube Nuts

Most BrakeQuip tube nuts have two distinct features for easier installation & dismantling.

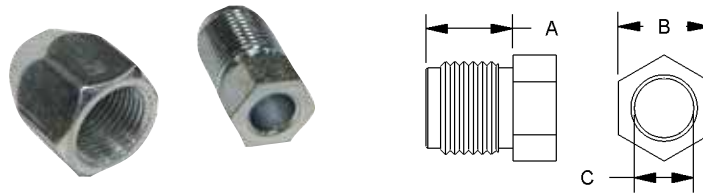
1. **A small step on the end of the thread** allows for easier installation because the step acts as a guide & makes it easier to start the thread. It also gives the thread clearance at the end, which eliminates the problem of flaring out when over-tightened. If this happens, the nut can be very difficult to remove & can sometimes destroy the thread when removed.
2. **A thread relief under the hex**, apart from looking more professional, allows the nut to be screwed down right up to the hex, if necessary.

### FEATURES:

- Male & Female
- Imperial & Metric threads
- Various tube sizes
- Zinc plated for corrosion resistance

See page 8 for Assortment Kit.  
Order part nos.

**BQ7005 & BQ7006**



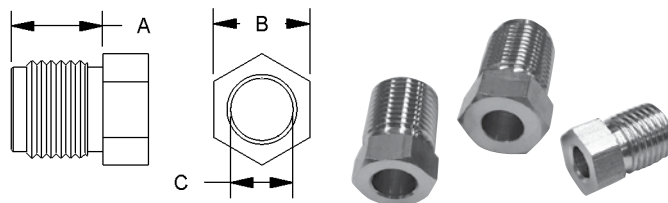
### Male Tube Nuts

| PART NO.         | THREAD       | A    | B     | C         |
|------------------|--------------|------|-------|-----------|
| <b>BQ72</b>      | M10 x 1      | 14mm | 10mm  | 3/16" DIN |
| <b>BQ2577</b>    | 7/16" x 24NS | 13mm | 7/16" | 1/4"      |
| <b>BQ2578</b>    | 1/2" x 20NF  | 12mm | 1/2"  | 5/16"     |
| <b>BQ4276</b>    | 3/8" x 20BSF | 16mm | 3/8"  | 3/16      |
| <b>BQ4277</b>    | 7/16" x 20NF | 18mm | 7/16" | 1/4"      |
| <b>BQ4285</b>    | 3/8" x 24NF  | 16mm | 3/8"  | 3/16"     |
| <b>BQ4510</b>    | M9 x 1       | 14mm | 10mm  | 3/16"     |
| <b>BQ4511</b>    | M10 x 1      | 14mm | 10mm  | 3/16"     |
| <b>BQ4511-11</b> | M10 x 1      | 12mm | 11mm  | 3/16"     |
| <b>BQ4511LT*</b> | M10 x 1      | 14mm | 10mm  | 3/16"     |
| <b>BQ4512</b>    | M10 x 1.25   | 15mm | 10mm  | 3/16"     |
| <b>BQ4513</b>    | M12 x 1      | 15mm | 12mm  | 1/4"      |
| <b>BQ4513LT*</b> | M12 x 1      | 15mm | 12mm  | 1/4"      |
| <b>BQ5555</b>    | 3/8" x 24NF  | 10mm | 3/8"  | 3/16"     |
| <b>BQ5842</b>    | 7/16" x 24NS | 10mm | 7/16" | 3/16"     |
| <b>BQ6118</b>    | 7/16" x 20NF | 18mm | 7/16" | 3/16"     |
| <b>BQ9148</b>    | M16 x 1.5    | 13mm | 16mm  | 10mm      |
| <b>BQ9149</b>    | M14 x 1.5    | 15mm | 16mm  | 8mm       |
| <b>BQ9157</b>    | M12 x 1.25   | 15mm | 12mm  | 1/4"      |
| <b>BQ9166</b>    | M16 x 1.5    | 16mm | 16mm  | 3/8"      |
| <b>BQ9169</b>    | M12 x 1      | 15mm | 14mm  | 1/4" DIN  |
| <b>BQ9180</b>    | M12 x 1      | 15mm | 12mm  | 3/16"     |
| <b>BQ9181</b>    | 5/8" x 18NF  | 14mm | 5/8"  | 3/8"      |
| <b>BQ9182</b>    | M12 x 1.5    | 13mm | 12mm  | 1/4"      |
| <b>BQ9183</b>    | M14 x 1.5    | 15mm | 14mm  | 1/4"      |
| <b>BQ9184</b>    | 1/2" x 20NF  | 13mm | 1/2"  | 3/16"     |
| <b>BQ9185</b>    | 9/16" x 18NF | 14mm | 9/16" | 3/16"     |
| <b>BQ9186</b>    | 9/16" x 18NF | 14mm | 9/16" | 1/4"      |
| <b>BQ9187</b>    | 1/2" x 20NF  | 14mm | 1/2"  | 1/4"      |
| <b>BQ9188</b>    | M10 x 1.5    | 15mm | 10mm  | 3/16"     |
| <b>BQ9189</b>    | M11 x 1.0    | 15mm | 11mm  | 3/16"     |
| <b>BQ9190</b>    | M11 x 1.25   | 15mm | 11mm  | 3/16"     |
| <b>BQ9191</b>    | M11 x 1.5    | 15mm | 11mm  | 3/16"     |
| <b>BQ9192</b>    | M12 x 1.25   | 15mm | 12mm  | 3/16"     |
| <b>BQ9193</b>    | M12 x 1.5    | 15mm | 12mm  | 3/16"     |
| <b>BQ9194</b>    | M13 x 1.0    | 15mm | 13mm  | 3/16"     |
| <b>BQ9195</b>    | M13 x 1.25   | 15mm | 13mm  | 3/16"     |
| <b>BQ9196</b>    | M13 x 1.5    | 15mm | 13mm  | 3/16"     |
| <b>BQ9197</b>    | M14 x 1.5    | 15mm | 14mm  | 5/16"     |
| <b>BQ9198</b>    | M16 x 1.5    | 16mm | 16mm  | 5/16"     |
| <b>BQ9199</b>    | M18 x 1.5    | 16mm | 18mm  | 5/16"     |

### Female Tube Nuts

| PART NO.      | THREAD       | A     | B        | C     |
|---------------|--------------|-------|----------|-------|
| <b>BQ55</b>   | 3/8" x 24NF  | 8mm   | 1/2"     | 3/16" |
| <b>BQ57</b>   | 7/16" x 20NF | 3/8"  | 9/16"    | 1/4"  |
| <b>BQ9150</b> | 7/16" x 20NF | 12mm  | 9/16" LP | 6.6mm |
| <b>BQ9151</b> | 3/8" x 24NF  | 10mm  | 7/16" LP | 6.6mm |
| <b>BQ9156</b> | M12 x 1.25   | 8mm   | 16mm     | 1/4"  |
| <b>BQ9174</b> | M12 x 1      | 10mm  | 16mm     | 3/16" |
| <b>BQ9175</b> | M10 x 1      | 10mm  | 1/2"     | 3/16" |
| <b>BQ9176</b> | 3/8" x 24NF  | 10mm  | 1/2"     | 3/16" |
| <b>BQ9177</b> | 1/2" x 20NF  | 7/16" | 5/8"     | 5/16" |
| <b>BQ9178</b> | M12 x 1.5    | 10mm  | 16mm     | 1/4"  |
| <b>BQ9179</b> | M12 x 1      | 10mm  | 16mm     | 1/4"  |

\*LT at the end of part number denotes long thread.



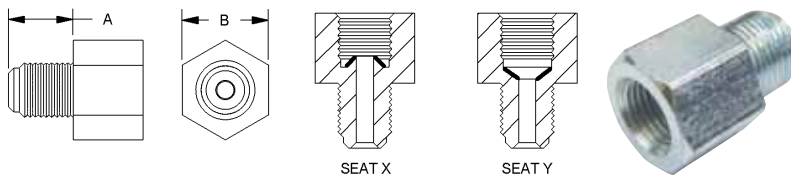
## Stainless Steel Tube Nuts

Give your vehicle the professional look of non rusting stainless steel.

- Bright finish
- Professional design
- Long lasting

| PART NO.         | TYPE | THREAD       | A    | B     | C     |
|------------------|------|--------------|------|-------|-------|
| <b>BQ2577SS*</b> | Male | 7/16" x 24NS | 13mm | 7/16" | 1/4"  |
| <b>BQ4511SS*</b> | Male | M10 x 1      | 14mm | 10mm  | 3/16" |
| <b>BQ4513SS*</b> | Male | M12 x 1      | 15mm | 12mm  | 1/4"  |
| <b>BQ5555SS*</b> | Male | 3/8" x 24NF  | 10mm | 3/8"  | 3/16" |
| <b>BQ5842SS*</b> | Male | 7/16" x 24NS | 10mm | 7/16" | 3/16" |

\*SS at the end of part number denotes stainless steel.



## Male / Female Thread Adapters

Save time & hassle when adapting different threads quickly & easily. Universal Male thread can be sealed with all sealing combinations.

**FEATURES:**

- Imperial & Metric threads
- Inverted seat & drill point seats available
- Zinc plated for corrosion resistance

See page 8 for Assortment Kit.

Order part no.

**BQ7004**

| PART NO.                        | MALE THREAD  | FEMALE THREAD | SEAT TYPE | A    | B      |
|---------------------------------|--------------|---------------|-----------|------|--------|
| <b>BQ40</b>                     | M10 x 1      | M10 x 1       | Y         | 13mm | 13mm   |
| <b>BQ41</b>                     | M10 x 1      | M10 x 1.25    | X         | 12mm | 13mm   |
| <b>BQ42</b>                     | M10 x 1.25   | M10 x 1       | X         | 12mm | 13mm   |
| <b>BQ43</b>                     | M12 x 1      | M10 x 1       | X         | 12mm | 16mm   |
| <b>BQ44</b>                     | M10 x 1      | M12 x 1       | X         | 12mm | 16mm   |
| <b>BQ45</b>                     | 3/8" x 24NF  | 7/16" x 24NS  | X         | 12mm | 9/16"  |
| <b>BQ46</b>                     | 7/16" x 24NS | 3/8" x 24NF   | X         | 12mm | 9/16"  |
| <b>BQ47</b>                     | 7/16" x 20NF | 3/8" x 24NF   | X         | 12mm | 9/16"  |
| <b>BQ48</b>                     | 1/8" x 27NPT | 3/8" x 24NF   | X         | 12mm | 1/2"   |
| <b>BQ49</b>                     | M10 x 1      | 3/8" x 24NF   | X         | 12mm | 13mm   |
| <b>BQ50</b>                     | 3/8" x 24NF  | M10 x 1       | X         | 12mm | 1/2"   |
| <b>BQ120</b>                    | 1/2" x 20NF  | 3/8" x 24NF   | X         | 12mm | 16mm   |
| <b>BQ121</b>                    | 9/16" x 20NS | 3/8" x 24NF   | X         | 12mm | 11/16" |
| <b>BQ122</b>                    | 1/2" x 20NF  | 7/16" x 24NS  | X         | 12mm | 16mm   |
| <b>BQ123</b>                    | 9/16" x 18NF | 7/16" x 24NS  | X         | 12mm | 11/16" |
| <b>BQ124</b>                    | 9/16" x 18NF | 3/8" x 24NF   | X         | 12mm | 11/16" |
| <b>BQ125</b>                    | M10 x 1      | 3/8" x 24NF   | Y         | 12mm | 13mm   |
| <b>BQ127</b>                    | 7/16" x 24NS | 1/2" x 20NF   | X         | 12mm | 5/8"   |
| <b>BQ156</b>                    | 3/8" x 24NF  | 3/8" x 24NF   | X         | 12mm | 9/16"  |
| <b>BQ187</b> <small>NEW</small> | M10 x 1.5    | 1/8" x 27NPT  | Y         | 11mm | 9/16"  |
| <b>BQ246</b>                    | 1/8" x 27NPT | M12 x 1       | Y         | 12mm | 16mm   |
| <b>BQ247</b>                    | 3/8" x 24NF  | 1/8" x 27NPT  | Y         | 11mm | 9/16"  |
| <b>BQ248</b>                    | 1/2" x 20NF  | 1/8" x 27NPT  | Y         | 11mm | 9/16"  |
| <b>BQ260</b>                    | 3/8" x 24NF  | 1/2" x 20NF   | X         | 12mm | 16mm   |
| <b>BQ261</b>                    | 3/8" x 24NF  | 9/16" x 18NF  | X         | 12mm | 11/16" |
| <b>BQ262</b>                    | 9/16" x 18NF | 3/8" x 24NF   | Y         | 12mm | 11/16" |



## Bump Tube Adapters

Handy, hard to get tube adapters for power steering & fuel systems.

**FEATURES:**

- Comes with a high temperature Viton O-Ring
- Imperial & Metric threads

See page 8 for Assortment Kit.

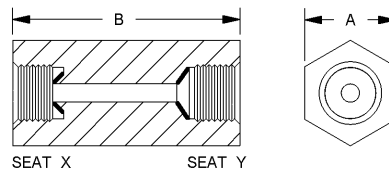
Order part no.

**BQ7003**

| PART NO.          | A                           | B             | C    |
|-------------------|-----------------------------|---------------|------|
| <b>14MMBT-6MJ</b> | 9/16" x 18NF (No.6 JIC)     | M14 x 1.5     | 39mm |
| <b>16MMBT-6FI</b> | 5/8" x 18NF (Inverted Seat) | M16 x 1.5     | 32mm |
| <b>16MMBT-6MJ</b> | 9/16" x 18NF (No.6 JIC)     | M16 x 1.5     | 39mm |
| <b>18MMBT-6MJ</b> | 9/16" x 18NF (No.6 JIC)     | M18 x 1.5     | 39mm |
| <b>5MBT-5MJ</b>   | 1/2" x 20NF (No. 5 JIC)     | 1/2" x 20NF   | 37mm |
| <b>7MBT-6MJ</b>   | 9/16" x 18NF (No.6 JIC)     | 11/16" x 18NF | 41mm |

## Female Tube Joiners

The recommended way to legally join two tubes together. BrakeQuip tube joiners allow you to join tubes professionally & safely. Also known as “unions.”



**FEATURES:**

- Imperial & Metric threads
- Inverted seat & drill point seats available
- Zinc plated for corrosion resistance

See page 8 for Assortment Kit.  
Order part no.

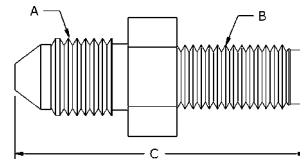
**BQ7009**

| PART NO.        | THREAD       | SEAT TYPE | A      | B      |
|-----------------|--------------|-----------|--------|--------|
| <b>BQ110</b>    | 3/8" x 24NF  | X         | 1/2"   | 22.2mm |
| <b>BQ111</b>    | 7/16" x 24NS | X         | 9/16"  | 25.0mm |
| <b>BQ111SS*</b> | 7/16" x 24NS | X         | 9/16"  | 25.0mm |
| <b>BQ112</b>    | 1/2" x 20NF  | X         | 5/8"   | 25.0mm |
| <b>BQ113</b>    | 5/8" x 18NF  | X         | 3/4"   | 29.0mm |
| <b>BQ114</b>    | M10 x 1      | Y         | 13.0mm | 29.0mm |
| <b>BQ115</b>    | 3/8" x 24NF  | Y         | 1/2"   | 29.0mm |
| <b>BQ116</b>    | M12 x 1      | X         | 5/8"   | 25.0mm |
| <b>BQ117</b>    | M10 x 1      | X         | 13.0mm | 22.0mm |
| <b>BQ119</b>    | 9/16" x 18NF | X         | 3/4"   | 27.0mm |
| <b>BQ147</b>    | M12 x 1      | Y         | 16.0mm | 28.0mm |

\*SS at the end of part number denotes stainless steel.

## Male Test Adapters

These handy test Adapters can be used for a variety of applications including tapping into your hydraulic system for pressure readings. Will fit most bleed screw openings.



**FEATURES:**

- Imperial & Metric threads
- Take off point are universal JIC ends
- Zinc plated for corrosion resistance

See page 8 for Assortment Kit.  
Order part no.

**BQ7010**

| PART NO.     | A                        | B             | C    |
|--------------|--------------------------|---------------|------|
| <b>BQ128</b> | 3/8" x 24NF (No. 3 JIC)  | M10 x 1.25    | 36mm |
| <b>BQ129</b> | 3/8" x 24NF (No. 3 JIC)  | M10 x 1.00    | 36mm |
| <b>BQ130</b> | 3/8" x 24NF (No. 3 JIC)  | M10 x 1.5     | 60mm |
| <b>BQ131</b> | 7/16" x 20NF (No. 4 JIC) | 3/8" x 24NF   | 37mm |
| <b>BQ132</b> | 3/8" x 24NF (No. 3 JIC)  | 1/4" x 28NF   | 36mm |
| <b>BQ133</b> | 3/8" x 24NF (No. 3 JIC)  | 5/16" x 24NF  | 36mm |
| <b>BQ134</b> | 7/16" x 20NF (No. 4 JIC) | 7/16" x 24NS  | 37mm |
| <b>BQ135</b> | 3/8" x 24NF (No. 3 JIC)  | 3/8" x 24NF   | 36mm |
| <b>BQ144</b> | 7/16" x 20NF (No. 4 JIC) | M12 x 1.00    | 37mm |
| <b>BQ145</b> | 7/16" x 20NF (No. 4 JIC) | M10 x 1.00    | 30mm |
| <b>BQ149</b> | 7/16" x 20NF (No. 4 JIC) | M12 x 1.25    | 37mm |
| <b>BQ157</b> | 3/8" x 24NF (No. 3 JIC)  | 1/8" x 28BSPP | 30mm |
| <b>BQ168</b> | 3/8" x 24NF (No. 3 JIC)  | 1/2" x 20NF   | 33mm |

**NEW**

## Bleed Screws

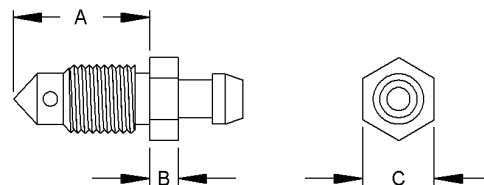
These popular bleed screws cover every thread for all known applications. Heavy duty design.

**FEATURES:**

- Heavy duty hex allows for good gripping
- Zinc plated for corrosion resistance
- Imperial & Metric threads

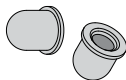
See page 8 for Assortment Kit.  
Order part no.

**BQ7014**



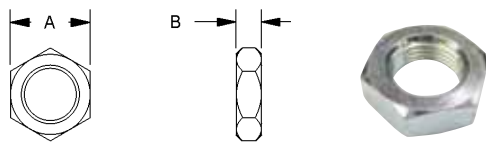
| PART NO.      | THREAD       | A      | B   | C     |
|---------------|--------------|--------|-----|-------|
| <b>BQ4433</b> | 3/8" x 24NF  | 20mm   | 5mm | 10mm  |
| <b>BQ4434</b> | M10 x 1      | 23mm   | 6mm | 10mm  |
| <b>BQ4435</b> | M10 x 1      | 19mm   | 6mm | 10mm  |
| <b>BQ4438</b> | 5/16" x 24NF | 17.5mm | 5mm | 5/16" |
| <b>BQ4439</b> | 1/4" x 28NF  | 15mm   | 5mm | 1/4"  |
| <b>BQ4440</b> | M10 x 1.5    | 18mm   | 5mm | 10mm  |
| <b>BQ4441</b> | M7 x 1       | 22mm   | 5mm | 7mm   |
| <b>BQ4442</b> | M8 x 1.25    | 22mm   | 5mm | 8mm   |
| <b>BQ4443</b> | M8 x 1       | 18mm   | 5mm | 8mm   |
| <b>BQ4444</b> | 7/16" x 24NS | 24mm   | 5mm | 7/16" |
| <b>BQ4445</b> | 7/16" x 20NF | 21mm   | 5mm | 7/16" |
| <b>BQ4446</b> | M10 x 1.25   | 21mm   | 5mm | 10mm  |

### Bleeder Caps



**BQ315 (Small)**  
**BQ316 (Large)**





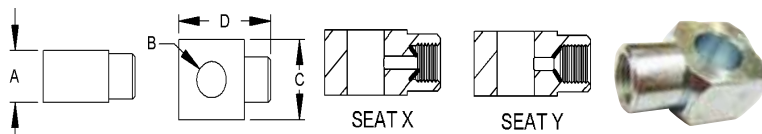
### Bulkhead Nuts

The biggest range of brake hose bulkhead nuts in the country. Also known as “half nuts” or “jam nuts.”

**FEATURES:**

- Zinc plated for corrosion resistance
- Imperial & Metric threads
- Heavy duty construction

| PART NO.    | THREAD        | A       | B   |
|-------------|---------------|---------|-----|
| <b>BQ13</b> | 5/8" x 18NF   | 15/16"  | 8mm |
| <b>BQ75</b> | 7/8" x 14NF   | 1-1/8"  | 8mm |
| <b>BQ77</b> | 11/16" x 18NS | 1"      | 8mm |
| <b>BQ78</b> | 3/8" x 24NF   | 1/2"    | 5mm |
| <b>BQ79</b> | M10 x 1       | 13mm    | 5mm |
| <b>BQ80</b> | 7/16" x 20NF  | 5/8"    | 6mm |
| <b>BQ81</b> | M12 x 1       | 19mm    | 6mm |
| <b>BQ82</b> | M12 x 1.5     | 19mm    | 6mm |
| <b>BQ83</b> | 1/2" x 20NF   | 3/4"    | 6mm |
| <b>BQ84</b> | 3/4" x 16NF   | 1-1/16" | 8mm |
| <b>BQ85</b> | M20 x 1.5     | 27mm    | 8mm |
| <b>BQ86</b> | M18 x 1.5     | 25mm    | 8mm |
| <b>BQ87</b> | M16 x 1.5     | 22mm    | 7mm |
| <b>BQ88</b> | M14 x 1.5     | 19mm    | 6mm |
| <b>BQ89</b> | 7/8" x 18NS   | 1-1/8"  | 8mm |



### Banjo Unions & Adapters

These fittings allow you to convert most joints to a sharp 90°, legally & professionally. The swivel feature of these fittings gives you more flexibility in installation.

**FEATURES:**

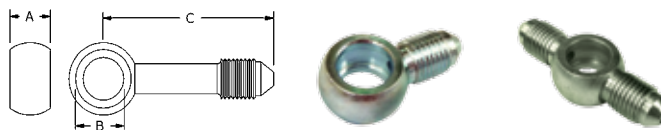
- Imperial & Metric threads
- Zinc plated for corrosion resistance

| PART NO.    | THREAD       | SEAT TYPE | A    | B     | C    | D    |
|-------------|--------------|-----------|------|-------|------|------|
| <b>BQ60</b> | 3/8" x 24NF  | X         | 1/2" | 10mm  | 17mm | 27mm |
| <b>BQ61</b> | M10 x 1      | X         | 13mm | 10mm  | 17mm | 27mm |
| <b>BQ62</b> | 7/16" x 24NS | X         | 14mm | 7/16" | 18mm | 28mm |
| <b>BQ63</b> | 1/2" x 20NF  | X         | 16mm | 1/2"  | 20mm | 30mm |

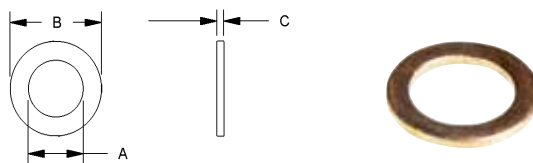
See page 8 for Assortment Kit.

Order part no.

**BQ7001**



| PART NO.     | A    | B    | C          | THREAD                   |
|--------------|------|------|------------|--------------------------|
| <b>BQ150</b> | 10mm | 10mm | 42mm       | 3/8" x 24NF (No. 3 JIC)  |
| <b>BQ151</b> | 10mm | 10mm | 21mm       | 3/8" x 24NF (No. 3 JIC)  |
| <b>BQ152</b> | 10mm | 10mm | 21mm x (2) | 3/8" x 24NF (No. 3 JIC)  |
| <b>BQ155</b> | 10mm | 10mm | 42mm       | 7/16" x 20NF (No. 4 JIC) |



### Copper Washers

Heavy duty copper washers for maximum sealing power. The legal & professional way to seal high pressure hydraulic braking systems.

**FEATURES:**

- Sizes to fit all banjo bolts
- Reduced outer diameter for less interference

See page 8 for Assortment Kit.

Order part no.

**BQ7000**

| PART NO.      | NOMINAL ID | A    | B     | C   |
|---------------|------------|------|-------|-----|
| <b>BQ813</b>  | 8mm        | 8.1  | 13.00 | 1.3 |
| <b>BQ3858</b> | 3/8"       | 9.6  | 15.60 | 1.5 |
| <b>BQ1016</b> | 10mm       | 10.1 | 16.00 | 1.5 |
| <b>BQ1118</b> | 7/16"      | 11.2 | 18.00 | 1.5 |
| <b>BQ1218</b> | 12mm       | 12.1 | 18.00 | 1.5 |
| <b>BQ1320</b> | 1/2"       | 12.8 | 20.00 | 2.0 |
| <b>BQ1421</b> | 9/16"      | 14.3 | 22.00 | 2.0 |
| <b>BQ1522</b> | 15mm       | 15.1 | 22.00 | 2.0 |
| <b>BQ1624</b> | 16mm       | 16.1 | 24.00 | 2.0 |

## Banjo Bolts

Full flow universal banjo bolts cover most applications. Made from high tensile steel for extra strength.

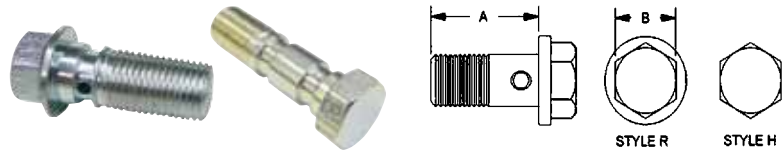
**FEATURES:**

- Reduced head size for appearance & less interference
- Zinc plated for corrosion resistance
- Imperial & Metric threads

See page 8 for Assortment Kit.

Order part no.

**BQ7007**



| PART NO.         | THREAD       | HEAD STYLE | A               | B     |
|------------------|--------------|------------|-----------------|-------|
| <b>BQ8075</b>    | M10 x 1.5    | R          | 20mm [13/16"]   | 12mm  |
| <b>BQ8076</b>    | M8 x 1       | R          | 17mm [11/16"]   | 10mm  |
| <b>BQ8077</b>    | M8 x 1.25    | R          | 16mm [5/8"]     | 10mm  |
| <b>BQ8078</b>    | M12 x 1.25   | R          | 25mm [1"]       | 14mm  |
| <b>BQ8083**</b>  | M10 x 1      | H          | 34.5mm [1-3/8"] | 14mm  |
| <b>BQ8084**</b>  | M10 x 1.25   | H          | 34.5mm [1-3/8"] | 14mm  |
| <b>BQ8085**</b>  | 3/8" x 24NF  | H          | 34.5mm [1-3/8"] | 9/16" |
| <b>BQ8086</b>    | M10 x 1.5    | R          | 24mm [15/16"]   | 11mm  |
| <b>BQ8086SS*</b> | M10 x 1.5    | R          | 24mm [15/16"]   | 11mm  |
| <b>BQ8087</b>    | M11 x 1.25   | R          | 24mm [15/16"]   | 5/8"  |
| <b>BQ8088</b>    | M10 x 1.5    | R          | 27mm [1-1/16"]  | 10mm  |
| <b>BQ8089</b>    | 7/16" x 20NF | R          | 24mm [15/16"]   | 7/16" |
| <b>BQ8090</b>    | 7/16 x 24NS  | R          | 27mm [1-1/16"]  | 1/2"  |
| <b>BQ8092</b>    | M12 x 1.5    | R          | 25mm [1"]       | 14mm  |
| <b>BQ8093</b>    | 3/8" x 24NF  | R          | 25mm [1"]       | 14mm  |
| <b>BQ8093SS*</b> | 3/8" x 24NF  | R          | 25mm [1"]       | 14mm  |
| <b>BQ8094</b>    | M10 x 1      | R          | 26mm [1"]       | 14mm  |
| <b>BQ8095</b>    | M10 x 1      | R          | 22mm [7/8"]     | 12mm  |
| <b>BQ8095SS*</b> | M10 x 1      | R          | 22mm [7/8"]     | 12mm  |
| <b>BQ8096</b>    | 7/16" x 20NF | R          | 27mm [1-1/16"]  | 11mm  |
| <b>BQ8097</b>    | 1/2" x 20NF  | R          | 30mm [1-3/16"]  | 9/16" |
| <b>BQ8098</b>    | M12 x 1      | R          | 21mm [13/16"]   | 13mm  |
| <b>BQ8099</b>    | M10 x 1.25   | R          | 22mm [7/8"]     | 12mm  |
| <b>BQ8099SS*</b> | M10 x 1.25   | R          | 22mm [7/8"]     | 12mm  |

\*SS at the end of part number denotes stainless steel.

\*\* Double Banjo Bolt

## Fitting Plugs

The ideal fitting for blanking off high pressure fluid ports. Fitting design has a universal seat, so no sealing compounds necessary.

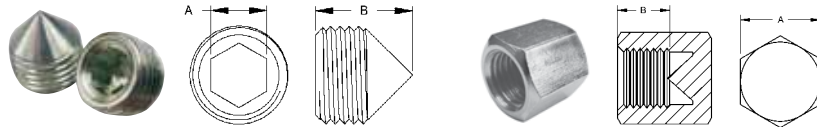
**FEATURES:**

- Zinc plated for corrosion resistance
- Imperial & Metric threads

See page 8 for Assortment Kit.

Order part no.

**BQ7012**



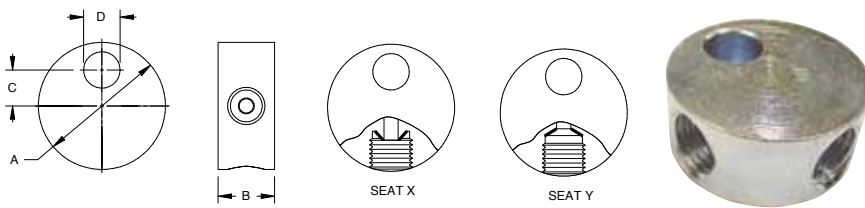
| PART NO.     | THREAD       | A     | B    |
|--------------|--------------|-------|------|
| <b>BQ18</b>  | M10 x 1      | 5mm   | 10mm |
| <b>BQ19</b>  | 3/8" x 24NF  | 3/16" | 10mm |
| <b>BQ26</b>  | 7/16" x 24NS | 1/4"  | 11mm |
| <b>BQ160</b> | 3/8" x 24NF  | 1/2"  | 8mm  |
| <b>BQ161</b> | 7/16" x 24NS | 9/16" | 8mm  |
| <b>BQ162</b> | 7/16" x 20NF | 9/16" | 8mm  |
| <b>BQ163</b> | 1/2" x 20NF  | 16mm  | 8mm  |
| <b>BQ164</b> | M10 x 1      | 13mm  | 8mm  |
| <b>BQ165</b> | M10 x 1.25   | 13mm  | 8mm  |
| <b>BQ166</b> | M12 x 1      | 16mm  | 8mm  |
| <b>BQ167</b> | M12 x 1.5    | 16mm  | 8mm  |

## Weld On Banjo Heads

Designed to make plumbing easy when banjo fittings are necessary. Simply braze 3/16" (4.75mm) tube to banjo head. Can also be countersunk for 1/4" tube.



| PART NO.     | A    | B     | C    | D    |
|--------------|------|-------|------|------|
| <b>BQ223</b> | 8mm  | 10mm  | 17mm | 25mm |
| <b>BQ224</b> | 10mm | 10mm  | 18mm | 25mm |
| <b>BQ225</b> | 10mm | 7/16" | 19mm | 25mm |



### 3-Way Tube Tees with Mounting Hole

The ideal fitting for legally joining three tubes together. Also features a mounting hole for secure installation.

**FEATURES:**

- Imperial & Metric threads
- Inverted seat & drill point seats available
- Zinc plated for corrosion resistance

See page 8 for Assortment Kit.

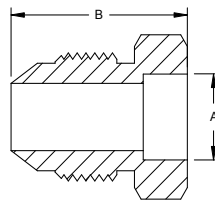
Order part no.

**BQ7002**

| PART NO.        | THREAD       | SEAT TYPE | A      | B    | C       | D    |
|-----------------|--------------|-----------|--------|------|---------|------|
| <b>BQ56A</b>    | 3/8" x 24NF  | X         | 28mm   | 1/2" | 7.70mm  | 8mm  |
| <b>BQ56ASS*</b> | 3/8" x 24NF  | X         | 28mm   | 1/2" | 7.70mm  | 8mm  |
| <b>BQ90A</b>    | 3/8" x 24NF  | Y         | 1-1/4" | 1/2" | 9.00mm  | 8mm  |
| <b>BQ91A</b>    | M10 x 1      | X         | 1-1/4" | 1/2" | 9.00mm  | 8mm  |
| <b>BQ92A</b>    | 7/16" x 24NS | X         | 1-1/4" | 14mm | 9.00mm  | 8mm  |
| <b>BQ93A</b>    | 1/8" x 27NPT | Y         | 26mm   | 1/2" | 10.75mm | 8mm  |
| <b>BQ94A</b>    | 7/16" x 20NF | Y         | 30mm   | 14mm | 10.75mm | 10mm |
| <b>BQ95A</b>    | M10 x 1      | Y         | 1-1/4" | 14mm | 10.00mm | 7mm  |

\*SS at the end of part number denotes stainless steel.

Ideal for Oil Cooler and A/C lines.



### Aluminum Weld On Fittings

The ultimate convenience item for aluminum tubes found on air conditioning and oil cooler lines. This problem solver will make it easy to connect aluminum tube to flexible hose.

The pre-fluxed aluminum brazing rods **BQ34** are ideal for brazing these fittings.

| PART NO.     | THREAD       | SEAT ANGLE | B    | A    |
|--------------|--------------|------------|------|------|
| <b>BQ170</b> | 9/16" x 18NF | 37°        | 20mm | 3/8" |
| <b>BQ171</b> | 5/8" x 18NF  | 45°        | 22mm | 3/8" |
| <b>BQ172</b> | 3/4" x 16NF  | 37°        | 23mm | 1/2" |
| <b>BQ173</b> | 7/8" x 14NF  | 37°        | 26mm | 5/8" |
| <b>BQ174</b> | 1-1/16" x 14 | 45°        | 34mm | 3/4" |

| PART NO.                          | DESCRIPTION        | DETAILS                        |
|-----------------------------------|--------------------|--------------------------------|
| <b>BQ56ASS</b>                    | 3-Way Tube Tee     | 3/8" x 24NF - 5/16" mount hole |
| <b>BQ111SS</b>                    | Female Tube Joiner | 7/16" x 24NS                   |
| <b>BQ292SS</b> <small>NEW</small> | Male Tube Joiner   | 3/8" x 24NF x 2                |
| <b>BQ293SS</b> <small>NEW</small> | Male Tube Joiner   | 3/8" x 24NF x 2                |
| <b>BQ2577SS</b>                   | Tube Nut Male      | 7/16" x 24NS - 1/4"            |
| <b>BQ4511SS</b>                   | Tube Nut Male      | M10 x 1 - 3/16"                |
| <b>BQ4513SS</b>                   | Tube Nut Male      | M12 x 1 - 1/4"                 |
| <b>BQ5555SS</b>                   | Tube Nut Male      | 3/8" x 24NF - 3/16"            |
| <b>BQ5842SS</b>                   | Tube Nut Male      | 7/16" x 24NS - 3/16"           |
| <b>BQ8086SS</b>                   | Banjo Bolt         | 10 x 1.5mm x 15/16"L           |
| <b>BQ8093SS</b>                   | Banjo Bolt         | 3/8" x 24NF x 1"L              |
| <b>BQ8095SS</b>                   | Banjo Bolt         | M10 x 1 x 1"L                  |
| <b>BQ8099SS</b>                   | Banjo Bolt         | M10 x 1.25 x 1"L               |

| PART NO.        | DESCRIPTION               |
|-----------------|---------------------------|
| <b>BQ3052SS</b> | Brake Hose Retaining Clip |

For more detail about each part please see the standard steel version.

### Stainless Steel Fittings

**Polished Stainless Steel Fittings**

Complete your brake plumbing job with stainless steel fittings for non-rusting durability. Polished finish for the chrome like look.



**Tandem Trailer Fitting Universal (4-Way)**



**BQ222**

- 3/8" x 24NF x 4 (Inverted Seat)
- Secured by bulkhead mount (Use **BQ13** bulkhead nut)
- Eliminates fittings and joins
- Any excess ports can be blanked off with a **BQ19** plug

**Brake Hose Retaining Clips**



**BQ3052**

Universal clip design secures most brake hoses to mounting surface.

**BQ3052SS** Polished stainless steel version.



**BQ3053**

Suits Toyota vehicles.

**Bleed Screw Repair Kit**



**BQ181**

This repair kit will rescue your brake component that has a stripped or broken bleed screw. Simply drill and tap to 1/8" x 27NPT thread. Works for all metals.

**Braze-On Fittings**



| PART NO.     | TUBE SIZE |
|--------------|-----------|
| <b>BQ226</b> | 3/8"      |
| <b>BQ227</b> | 10mm      |
| <b>BQ228</b> | 1/2"      |

No. 6 JIC (9/16" x 18NF) male braze-on fitting for power steering tubes.

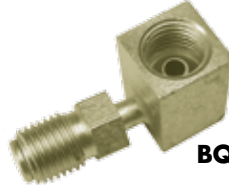
**Copper Seat Sealer**



**BQ244**

The ideal solution for sealing damaged seats. Suitable for all 3/8" and 10mm female fitting seats. This sealer is a must when working with stainless steel fittings.

**Swivel Elbow**



**BQ141**

3/8" x 24NF - 3/8" x 24NF

This handy swivel fitting is ideal for a tight 90° situation where the connection needs to be seated on an inverted seat.

**3-Way Tee (with Bracket)**



**BQ7812**

**FEATURES:**

- 3/8" x 24NF x 3 (Inverted Seat)
- All steel construction

**Transmission Line Adapters**



**BQ182**

5/8" x 18NF inverted - Straight



**BQ183**

5/8" x 18NF inverted - 90°

Convert your push on connection transmission lines to a double flare connection. This enables you to make and repair these lines in your shop.

**Female Hose Joiner**



**BQ266**

3/8" x 24NF No. 3 JIC (AN)

Joins 3/8" x 24NF female fittings – universal design for both seat types.

**3-Way Male Tees**

**NEW**



| PART NO.     | THREAD                 | HOLE |
|--------------|------------------------|------|
| <b>BQ360</b> | 3/8" x 24NF (No.3 AN)  | 8mm  |
| <b>BQ361</b> | 7/16" x 20NF (No.4 AN) | 8mm  |

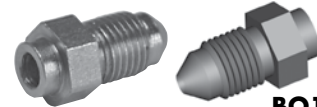
**Universal Mounting Bracket**



**BQB06**

Universal hole size allows most brake hoses to be securely mounted. Bracket can be screwed on, riveted, or welded to frame. Rounded finish for professional looks.

**Braze-On Fitting**



**BQ153**

The ultimate problem solver for connecting metal tube to hose.

**FEATURES:**

- Universal countersink hole for 3/16" & 1/4" tube sizes
- Popular No. 3 JIC take off point

**3-Way Tees**



**BQ264**

**FEATURES:**

- 3/8" x 24NF x (3) inverted seat
- Compact steel fitting for joining 3 lines



**BQ265**

**FEATURES:**

- 3/8" x 24NF x (2) inverted seat
- 1/8" x 27NPT x (1)
- Compact steel fitting for installing brake pressure switch into system

**Tube or Hose Joiners**

**BQ292SS**

**BQ293SS**



**NEW**

No. 3 JIC (AN) Both Ends

3/8" x 24NF

37° seat

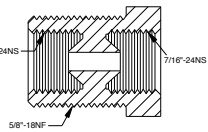
(Bulkhead)

**NEW**

**Tube Joiner**



**BQ148**



Bulkhead Mounted Female Tube Joiner  
7/16" x 24NS – 5/8" x 18NF





### Assortment Kits Available

**Copper Washers 130 pcs. BQ7000**



Heavy duty copper washers for maximum sealing power. The legal & professional way to seal high pressure hydraulic braking systems.

**Imperial Tube Nuts 82 pcs. BQ7006**



Male and female imperial thread tube nuts to fit most applications.

**Banjo Unions & Adapters 24 pcs. BQ7001**



These fittings allow you to convert most joints to a sharp 90°, legally & professionally. The swivel feature of these fittings gives you more flexibility in installation.

**Banjo Bolts 52 pcs. BQ7007**



Full flow universal banjo bolts to suit most applications.

**3-Way Tube Tees with Mounting Hole 12 pcs. BQ7002**



The ideal fitting for legally joining three tubes together. Also features a mounting hole for secure installation.

**Female Tube Joiners 24 pcs. BQ7009**



The recommended way to legally join two tubes together. These tube joiners allow you to join tubes professionally & safely.

**Bump Tube Adapters 24 pcs. BQ7003**



Handy, hard to get tube adapters for power steering & fuel systems.

**Male Test Adapters 24 pcs. BQ7010**



These handy test adapters can be used for a variety of applications including tapping into your hydraulic system for pressure readings. Will fit most bleed screw openings.

**Male - Female Thread Adapters 72 pcs. BQ7004**



Save time & hassle when adapting different threads quickly & easily. Universal male thread can be sealed with all sealing combinations.

**Brake Hose Plugs 23 pcs. BQ7012**



The ideal fitting for blanking off high pressure fluid ports. Fitting design has a universal seat so no sealing compounds necessary.

**Metric Tube Nuts 70 pcs. BQ7005**



Male and Female metric thread tube nuts to fit most applications.

**Bleed Screws 70 pcs. BQ7014**



These popular bleed screws cover every thread on all applications. Never be stuck again.

# Repair or Replace Your Own Fuel Lines

✓ **Easy to Use**

No special insertion tools required

✓ **Save Money**

Cost effective solution to OEM fuel lines

✓ **Complete Coverage**

Create fuel lines for virtually any vehicle

✓ **Save Time**

Reduce labor time with easy installation

✓ **Very Safe**

FuelFlex tubing far exceeds minimum requirements

✓ **Modern**

Utilizes same advanced technology used by OEMs



## Fuel Line Catalog

### Connector 90°



**FL20-5**

8mm FuelFlex to 8mm FuelFlex

**FL20-6**

10mm FuelFlex to 10mm FuelFlex

### Connector 30°



**FL11-14mm**

8mm FuelFlex to M14 x 1.5 Double Flare

### Connector 180°



**FL15**

10mm FuelFlex to M16 x 1.5 Bump

GM Fuel Filter line adapter

### Connector Straight



| PART NO.         | MODEL | TUBE END          | THREAD    | END FORM     | LENGTH (MM) |
|------------------|-------|-------------------|-----------|--------------|-------------|
| <b>FL07-5</b>    | GM    | 5/16" Rubber Hose | M14 x 1.5 | Bump         | 230         |
| <b>FL07-6</b>    | GM    | 3/8" Rubber Hose  | M16 x 1.5 | Bump         | 230         |
| <b>FL12-14mm</b> |       | 8mm FuelFlex      | M14 x 1.5 | Double Flare | 90          |
| <b>FL13-5</b>    | GM    | 8mm FuelFlex      | M14 x 1.5 | Bump         | 155         |
| <b>FL13-6</b>    | GM    | 10mm FuelFlex     | M16 x 1.5 | Bump         | 155         |
| <b>FL14-5</b>    | GM    | 8mm FuelFlex      | M14 x 1.5 | Bump         | 100         |
| <b>FL14-6</b>    | GM    | 10mm FuelFlex     | M16 x 1.5 | Bump         | 100         |

### FuelFlex / Rubber Adaptors



**FL02-5**

8mm FuelFlex to 5/16" Rubber Hose

**FL02-6**

10mm FuelFlex to 3/8" Rubber Hose

### FuelFlex Joiners



**FL01-5**

8mm FuelFlex to 8mm FuelFlex

**FL01-6**

10mm FuelFlex to 10mm FuelFlex

### Push Quick Connects

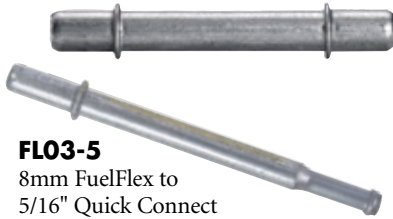
| PART NO.        | FEMALE (IN.) | MALE (IN.) | PUSH-ON TYPE |
|-----------------|--------------|------------|--------------|
| <b>FL08-4-5</b> | 1/4"         | 5/16"      | Straight     |
| <b>FL08-5-5</b> | 5/16"        | 5/16"      | Straight     |
| <b>FL08-5-6</b> | 5/16"        | 3/8"       | Straight     |
| <b>FL08-6-5</b> | 3/8"         | 5/16"      | Straight     |
| <b>FL08-6-6</b> | 3/8"         | 3/8"       | Straight     |
| <b>FL09-5-5</b> | 5/16"        | 5/16"      | 90°          |
| <b>FL09-5-6</b> | 5/16"        | 3/8"       | 90°          |
| <b>FL09-6-5</b> | 3/8"         | 5/16"      | 90°          |
| <b>FL09-6-6</b> | 3/8"         | 3/8"       | 90°          |

**FEATURES:**

- Thumb release convenience
- No special disconnect tools required
- Works with domestic and foreign vehicles



**Quick Connector Tubes**

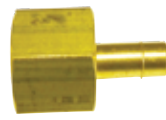


**FLO3-5**  
8mm FuelFlex to  
5/16" Quick Connect

**FLO3-6**  
10mm FuelFlex to  
3/8" Quick Connect

**FLO4-6**  
3/8" Quick Connect to  
3/8" Quick Connect

**FLO5-4**  
8mm FuelFlex to  
1/4" Quick Connect



**Female / FuelFlex Adaptors - Brass**

| PART NO.         | MODEL | MALE          | FEMALE    | SEAT           |
|------------------|-------|---------------|-----------|----------------|
| <b>FL10-5</b>    | GM    | 8mm FuelFlex  | M14 x 1.5 | Bump           |
| <b>FL10-6</b>    | GM    | 10mm FuelFlex | M16 x 1.5 | Bump           |
| <b>FL10-14mm</b> |       | 8mm FuelFlex  | M14 x 1.5 | Inverted Flare |



**Female / FuelFlex Adaptors - Steel**

| PART NO.       | MODEL | MALE          | FEMALE    | SEAT |
|----------------|-------|---------------|-----------|------|
| <b>FL10-5S</b> | GM    | 8mm FuelFlex  | M14 x 1.5 | Bump |
| <b>FL10-6S</b> | GM    | 10mm FuelFlex | M16 x 1.5 | Bump |

**FuelFlex - FuelFlex  
Compression Fittings**

| PART NO.    | SIZE         |
|-------------|--------------|
| <b>FL37</b> | 8mm to 8mm   |
| <b>FL39</b> | 10mm to 10mm |



**FuelFlex - Steel  
Tube Compression**

| PART NO.    | SIZE         |
|-------------|--------------|
| <b>FL36</b> | 8mm to 5/16" |
| <b>FL38</b> | 10mm to 3/8" |



**FuelFlex Tubing**

| PART NO.      | NOMINAL SIZE (IN.) | MINIMUM LENGTH (FT.) |
|---------------|--------------------|----------------------|
| <b>T8-FF</b>  | 5/16"              | 25'                  |
| <b>T10-FF</b> | 3/8"               | 25'                  |

Color = Black

**Note:** FuelFlex tubing sizes reflect industry terminology 5/16" (8mm) and 3/8" (10mm). Plastic tubing sizes are measured by OD whereas rubber hose is measured by ID.



**Bump Tube Nuts**

| PART NO.      | SIZE              |
|---------------|-------------------|
| <b>BQ9148</b> | M16 x 1.5 - 3/8"  |
| <b>BQ9149</b> | M14 x 1.5 - 5/16" |



**FuelFlex Reducers**

**FL06-5-4**  
8mm FuelFlex to 1/4" FuelFlex  
**FL06-6-5**  
10mm FuelFlex to 8mm FuelFlex



**Fuel Line Tools and Accessories**

**Hose Clamp Pliers**



**BQ400**  
For crimping hose clamps.  
Compact for tight spaces.

**Professional Hose Clamp Pliers**



**BQ412**  
For crimping hose clamps.  
Heavy duty version allows for less effort. Very versatile. You can crimp straight on or 90° to the side.



**Tube & Hose Cutter**



**BQ-01**  
Works on most rubber and plastic tubing up to 1/2".

**Heat Shield Sleeve**



**BQ313-SV**  
One Size Fits All. Comes in 5' Rolls.

**360° Tube Clamps**



**FL25** - 8mm (5/16")  
**FL26** - 10mm (3/8")  
Full 360° crimping for a positive seal.

**FuelFlex Tube  
Support Clamps**



| PART NO.    | TUBE SIZE   |
|-------------|-------------|
| <b>FL34</b> | 10mm (3/8") |
| <b>FL35</b> | 8mm (5/16") |

**Clamp Tek Screw**



| PART NO.     | HEX   | LENGTH (IN.) |
|--------------|-------|--------------|
| <b>BQ811</b> | 5/16" | 1/2"         |

**Spring Mandrel**

| PART NO.     | TUBE SIZE   |
|--------------|-------------|
| <b>BQ318</b> | 8mm (5/16") |
| <b>BQ319</b> | 10mm (3/8") |



Enables you to permanently form tubing without kinking.



# Convenient all-in-one Fuel Line Kit



**BQFL4500**

## Professional Fuel Line Kit

Includes 185 pieces plus 50' of tubing

### Fuel Line Kit Contents

| PART NO          | DESCRIPTION  | QTY |
|------------------|--|-----|
| <b>BQ313-SV</b>  | Heat Shield Sleeve (per ft.)                         | 5   |
| <b>BQ400</b>     | Hose Clamp Pliers - Small                            | 1   |
| <b>BQ-01</b>     | Tube Cutter  | 1   |
| <b>BQ811</b>     | Tek Screw  | 20  |
| <b>BQ9148</b>    | Tube Nut Male (M16 x 1.5 - 10mm)                     | 4   |
| <b>BQ9149</b>    | Tube Nut Male (M14 x 1.5 - 8mm)                      | 4   |
| <b>FL01-5</b>    | 5/16" FuelFlex Joiner                                | 2   |
| <b>FL01-6</b>    | 3/8" FuelFlex Joiner                                 | 2   |
| <b>FL02-5</b>    | 5/16" FuelFlex to Rubber Hose Adaptor                | 2   |
| <b>FL02-6</b>    | 3/8" FuelFlex to Rubber Hose Adaptor                 | 2   |
| <b>FL03-5</b>    | 5/16" FuelFlex to Quick Connect Adaptor Tube         | 2   |
| <b>FL03-6</b>    | 3/8" FuelFlex to Quick Connect Adaptor Tube          | 2   |
| <b>FL04-6</b>    | 3/8" Quick Connect to Quick Connect Tube             | 2   |
| <b>FL05-4</b>    | 5/16" FuelFlex to 1/4" Quick Connect Adaptor Tube    | 2   |
| <b>FL06-6-5</b>  | 3/8" to 5/16" FuelFlex Reducing Tube                 | 2   |
| <b>FL07-5</b>    | 5/16" Rubber Hose to M14 x 1.5 Bump Tube Connector   | 2   |
| <b>FL07-6</b>    | 3/8" Rubber Hose to M16 x 1.5 Bump Tube Connector    | 2   |
| <b>FL08-4-5</b>  | 1/4" Female - 5/16" Male Straight Push Connect       | 2   |
| <b>FL08-5-5</b>  | 5/16" Female - 5/16" Male Straight Push Connect      | 2   |
| <b>FL08-5-6</b>  | 5/16" Female - 3/8" Male Straight Push Connect       | 2   |
| <b>FL08-6-5</b>  | 3/8" Female - 5/16" Male Straight Push Connect       | 2   |
| <b>FL08-6-6</b>  | 3/8" Female - 3/8" Male Straight Push Connect        | 2   |
| <b>FL09-5-5</b>  | 5/16" Female - 5/16" Male 90° Push Connect           | 2   |
| <b>FL09-5-6</b>  | 5/16" Female - 3/8" Male 90° Push Connect            | 2   |
| <b>FL09-6-5</b>  | 3/8" Female - 5/16" Male 90° Push Connect            | 2   |
| <b>FL09-6-6</b>  | 3/8" Female - 3/8" Male 90° Push Connect             | 2   |
| <b>FL10-14mm</b> | 5/16" FuelFlex - M14 x 1.5 Female Adaptor - Inverted | 1   |
| <b>FL10-5</b>    | 5/16" FuelFlex - M14 x 1.5 Female Adaptor - Bump     | 1   |
| <b>FL10-6</b>    | 3/8" FuelFlex - M16 x 1.5 Female Adaptor - Bump      | 1   |
| <b>FL11-14mm</b> | 5/16" FuelFlex to M14 x 1.5 30° Adaptor Tube - Flare | 2   |
| <b>FL12-14mm</b> | 5/16" FuelFlex to M14 x 1.5 Adaptor Tube - Flare     | 2   |
| <b>FL13-5</b>    | 5/16" FuelFlex to M14 x 1.5 Adaptor Tube - Bump      | 2   |
| <b>FL13-6</b>    | 3/8" FuelFlex to M16 x 1.5 Adaptor Tube - Bump       | 2   |
| <b>FL14-5</b>    | 5/16" FuelFlex to M14 x 1.5 Adaptor Tube - Bump      | 2   |
| <b>FL14-6</b>    | 3/8" FuelFlex to M16 x 1.5 Adaptor Tube - Bump       | 2   |
| <b>FL15</b>      | 3/8" FuelFlex to M16 x 1.5 180° Adaptor Tube - Bump  | 1   |
| <b>FL20-5</b>    | 5/16" to 5/16" FuelFlex 90° Tube Connector           | 2   |
| <b>FL20-6</b>    | 3/8" to 3/8" FuelFlex 90° Tube Connector             | 2   |
| <b>FL25</b>      | 5/16" FuelFlex 360° Tube Clamp                       | 20  |
| <b>FL26</b>      | 3/8" FuelFlex 360° Tube Clamp                        | 20  |
| <b>FL34</b>      | 3/8" FuelFlex Tube Support Clamps                    | 20  |
| <b>FL35</b>      | 5/16" FuelFlex Tube Support Clamps                   | 20  |
| <b>FL36</b>      | 5/16" FuelFlex To 5/16" Steel Compression Fitting    | 2   |
| <b>FL37</b>      | 5/16" FuelFlex To 5/16" FuelFlex Compression Fitting | 2   |
| <b>FL38</b>      | 3/8" FuelFlex To 3/8" Steel Compression Fitting      | 2   |
| <b>FL39</b>      | 3/8" FuelFlex To 3/8" FuelFlex Compression Fitting   | 2   |
| <b>T8-25FF</b>   | 5/16" Fuel Flex Tubing (per ft.)                     | 25  |
| <b>T10-25FF</b>  | 3/8" Fuel Flex Tubing (per ft.)                      | 25  |

### Solve Starting Problems!

The quick, inexpensive, and smart solution for hard-start engine problems involving the loss of fuel pressure.

Electric fuel pumps have internal check valves which often fail. In turn, fuel pressure drops & starting problems occur. Installing a new, in-line check valve solves starting problems quickly & easily.



#### BENEFITS

- Avoid dropping the fuel tank
- Repair virtually any vehicle that uses a 5/16" (8mm) or 3/8" (10mm) steel, plastic, or rubber fuel line
- Complete typical repairs in 15-minutes or less

### Check Valves

**FL21**  
8mm  
**FL22**  
10mm



Directional check valve to be installed with FuelFlex tubing.  
**IMPORTANT**  
Not for use with returnless systems

**NOTE:** To determine if the fuel system has a return line, check the following: If the fuel sender unit at the tank or the fuel rail that feeds the injectors has two lines, then generally this means the system has a return line and one-way check valves can be used.

### Assembly Instructions

Installing FuelFlex tubing to a fitting  
It is as simple as 1, 2, 3.



1. Slide clamp over the FuelFlex tubing.



2. Push FuelFlex tubing all the way on the fitting.



3. Crimp clamp over tube.

## Simple Repair - Simple Replacement

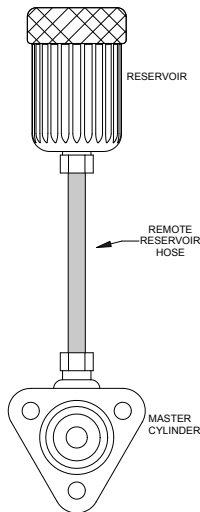


### Remote Reservoir Hose

This brake fluid compatible hose connects any remote brake fluid reservoir to the master cylinder. Hoses are black in color and purchased in 10' increments.



| PART NO.     | ID SIZE | OD    |
|--------------|---------|-------|
| <b>BQ320</b> | 1/4"    | 7/16" |
| <b>BQ321</b> | 5/16"   | 1/2"  |
| <b>BQ322</b> | 3/8"    | 9/16" |



### Low Pressure Power Steering Hose



**BQ331**

| ID SIZE (IN.) | OD SIZE (MM) | WORKING PRESSURE (PSI) | MINIMUM BURST PRESSURE (PSI) | MIN. BEND RADIUS (IN.) |
|---------------|--------------|------------------------|------------------------------|------------------------|
| 3/8"          | 16.25        | 300                    | 1,200                        | 3"                     |

Temperature Range: -40°F to +300°F (-40°C to +150°C)

This hose has a high temperature rating and is compatible with most power steering oils. Fabric cover to distinguish it and for flexibility. Complies with SAE J1019 standards.

### High Performance Stainless Braided Hose

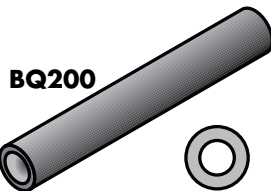


| PART NO.     | SIZE (ID.) | SIZE (OD.) | JACKET COLOR |
|--------------|------------|------------|--------------|
| <b>BQ301</b> | 3.5mm      | 6.3mm      | Nil          |

High performance stainless braid hose designed for high pressure brake systems for race cars.

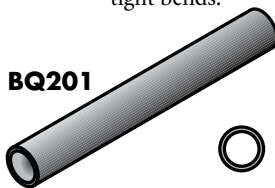
PTFE inner core allows all fluids compatibility.

### Hose Accessories



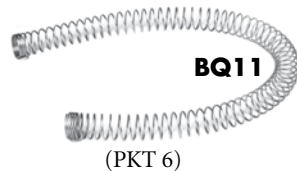
**BQ200**

Used as a strain reliever with tight bends.



**BQ201**

Used for extra abrasion protection - 7/16" ID.



**BQ11**

(PKT 6)

Available in 10' increments.



**BQ312-GY BQ312-BK**  
Heat Protection Sleeve

| PART NO.        | COLOR | TEMPERATURE |              |
|-----------------|-------|-------------|--------------|
|                 |       | CONSTANT    | INTERMITTENT |
| <b>BQ312-BK</b> | Black | 500° F      | 3,000° F     |
| <b>BQ312-GY</b> | Gray  | 500° F      | 3,000° F     |

Attractive brake hose cover to protect the hose from hot components. Simply slide over hose before crimping end fittings.



**BQ202**

| PART NO.     | DESCRIPTION             | ID     | OD     | MATERIAL | COLOR | LENGTH | MIN. QTY. |
|--------------|-------------------------|--------|--------|----------|-------|--------|-----------|
| <b>BQ11</b>  | Hose Protector Spring   | 14mm   | 16mm   | Steel    | Gray  | 16"    | 6         |
| <b>BQ200</b> | Fitting Strain Reliever | 7/16"  | 11/16" | Rubber   | Black | 10'    | 1         |
| <b>BQ201</b> | Hose Abrasion Protector | 7/16"  | 9/16"  | Rubber   | Black | 50'    | 1         |
| <b>BQ202</b> | Hose Protection Spring  | 11.5mm | 16.5mm | Nylon    | Black | 500mm  | 2         |

### Hose Cutters



**BQ2102**

**Economy Style**

Multi purpose hose cutter cuts rubber and plastic tubing up to 28mm.



**BQ2103**

This heavy duty tool cuts hose clean & square every time with ease. Blade is reversible for double life.

**Replacement Blade**  
**BQ2101B**



**BQ2104**

**Small Braided Hose Shears**

High grade braided hose shears that cuts the hose clean without fraying the braid. Handy inside stops are ideal for rounding up the hose after cutting.

**Metal Tube**



**EziBend Tube**

Convert steel tubes to non-rusting EziBend tube:

- Exceeds International Standards
- Doesn't rust or corrode
- Easy to flare and bend
- Able to bend tube by hand on the vehicle
- OEM on luxury European vehicles
- Polishes to a brilliant finish
- Long term safety benefits
- Made in the USA
- Available in sizes 3/16", 1/4", 5/16", 3/8"

| PART NO.          | OD SIZE (IN.) | WALL THICKNESS (IN.) | LENGTH (FT.) |
|-------------------|---------------|----------------------|--------------|
| <b>T187-25CN</b>  | 3/16"         | .028"                | 25'          |
| <b>T187-100CN</b> | 3/16"         | .028"                | 100'         |
| <b>T250-25CN</b>  | 1/4"          | .028"                | 25'          |
| <b>T250-100CN</b> | 1/4"          | .028"                | 100'         |
| <b>T312-25CN</b>  | 5/16"         | .028"                | 25'          |
| <b>T375-25CN</b>  | 3/8"          | .028"                | 25'          |



**Polished Stainless Steel Tube**

| PART NO.         | OD SIZE (IN.) | WALL THICKNESS (IN.) | LENGTH (FT.) |
|------------------|---------------|----------------------|--------------|
| <b>T187-20SS</b> | 3/16"         | .028"                | 20'          |
| <b>T250-20SS</b> | 1/4"          | .028"                | 20'          |
| <b>T312-20SS</b> | 5/16"         | .028"                | 20'          |
| <b>T375-20SS</b> | 3/8"          | .028"                | 20'          |

**316L marine grade stainless steel that's been soft annealed which makes it easier to bend and flare.**

**Male Tube Nuts**

| PART NO.         | THREAD       | C         |
|------------------|--------------|-----------|
| <b>BQ72</b>      | M10 x 1      | 3/16" DIN |
| <b>BQ2577</b>    | 7/16" x 24NS | 1/4"      |
| <b>BQ2578</b>    | 1/2" x 20NF  | 5/16"     |
| <b>BQ4276</b>    | 3/8" x 20BSF | 3/16"     |
| <b>BQ4277</b>    | 7/16" x 20NF | 1/4"      |
| <b>BQ4285</b>    | 3/8" x 24NF  | 3/16"     |
| <b>BQ4510</b>    | M9 x 1       | 3/16"     |
| <b>BQ4511</b>    | M10 x 1      | 3/16"     |
| <b>BQ4511-11</b> | M10 x 1      | 3/16"     |
| <b>BQ4511LT*</b> | M10 x 1      | 3/16"     |
| <b>BQ4512</b>    | M10 x 1.25   | 3/16"     |
| <b>BQ4513</b>    | M12 x 1      | 1/4"      |
| <b>BQ4513LT*</b> | M12 x 1      | 1/4"      |
| <b>BQ5555</b>    | 3/8" x 24NF  | 3/16"     |
| <b>BQ5842</b>    | 7/16" x 24NS | 3/16"     |
| <b>BQ6118</b>    | 7/16" x 20NF | 3/16"     |
| <b>BQ9148</b>    | M16 x 1.5    | 10mm      |
| <b>BQ9149</b>    | M14 x 1.5    | 8mm       |
| <b>BQ9157</b>    | M12 x 1.25"  | 1/4"      |
| <b>BQ9166</b>    | M16 x 1.5"   | 3/8"      |
| <b>BQ9169</b>    | M12 x 1      | 1/4" DIN  |
| <b>BQ9180</b>    | M12 x 1      | 3/16"     |
| <b>BQ9181</b>    | 5/8" x 18NF  | 3/8"      |
| <b>BQ9182</b>    | M12 x 1.5    | 1/4"      |
| <b>BQ9183</b>    | M14 x 1.5    | 1/4"      |
| <b>BQ9184</b>    | 1/2" x 20NF  | 3/16"     |
| <b>BQ9185</b>    | 9/16" x 18NF | 3/16"     |
| <b>BQ9186</b>    | 9/16" x 18NF | 1/4"      |
| <b>BQ9187</b>    | 1/2" x 20NF  | 1/4"      |
| <b>BQ9188</b>    | M10 x 1.5    | 3/16"     |
| <b>BQ9189</b>    | M11 x 1.0    | 3/16"     |
| <b>BQ9190</b>    | M11 x 1.25   | 3/16"     |
| <b>BQ9191</b>    | M11 x 1.5    | 3/16"     |
| <b>BQ9192</b>    | M12 x 1.25   | 3/16"     |
| <b>BQ9193</b>    | M12 x 1.5    | 3/16"     |
| <b>BQ9194</b>    | M13 x 1.0    | 3/16"     |
| <b>BQ9195</b>    | M13 x 1.25   | 3/16"     |
| <b>BQ9196</b>    | M13 x 1.5    | 3/16"     |
| <b>BQ9197</b>    | M14 x 1.5    | 5/16"     |
| <b>BQ9198</b>    | M16 x 1.5    | 5/16"     |
| <b>BQ9199</b>    | M18 x 1.5    | 5/16"     |

**Female Tube Nuts**

| PART NO.      | THREAD       | C     |
|---------------|--------------|-------|
| <b>BQ55</b>   | 3/8" x 24NF  | 3/16" |
| <b>BQ57</b>   | 7/16" x 20NF | 1/4"  |
| <b>BQ9150</b> | 7/16" x 20NF | 6.6mm |
| <b>BQ9151</b> | 3/8" x 24NF  | 6.6mm |
| <b>BQ9156</b> | M12 x 1.25   | 1/4"  |
| <b>BQ9174</b> | M12 x 1      | 3/16" |
| <b>BQ9175</b> | M10 x 1      | 3/16" |
| <b>BQ9176</b> | 3/8" x 24NF  | 3/16" |
| <b>BQ9177</b> | 1/2" x 20NF  | 5/16" |
| <b>BQ9178</b> | M12 x 1.5    | 1/4"  |
| <b>BQ9179</b> | M12 x 1      | 1/4"  |

For Stainless Steel Tube Nuts please see page 2.

**Brake Tube Protector**

No rust Stainless Steel Spring protects your brake tube from gravel & debris. Easy to install. Just cut to length. Available in sizes 3/16" & 1/4" ID in 3' lengths. Can be polished to shine.

**BQ232**

(1/4")

(3/16")

**BQ231**

**Tube Clamps**



Non-Rusting White Nylon

| PART NO.     | SIZE  |
|--------------|-------|
| <b>BQ249</b> | 3/16" |
| <b>BQ250</b> | 1/4"  |
| <b>FL35</b>  | 5/16" |
| <b>FL34</b>  | 3/8"  |

**Tube Cutting Tools**

**BQ601** - Mini tube cutter. Has a special heavy duty cutting wheel for cutting stainless steel tubing. Great for cutting tube in tight places. Cut tube sizes 3/16"-5/8".



**BQ601**



**BQ602**

**BQ602** - Professional tube cutter. Has a special heavy duty cutting wheel for cutting stainless steel tubing. Cut tube sizes 3/16"-5/8".

Replacement cutting wheels available - **BQ602C.**



**BQ602C**

# The Fastest Flaring Tool in the West

## Die & Punch Guide

| Bubble & Double Flare - 45° |           |                |                |
|-----------------------------|-----------|----------------|----------------|
| TUBE SIZE                   | DIE NO.   | PUNCH NO. OP.1 | PUNCH NO. OP.2 |
| 3/16"                       | BQ350-3   | BQ350-21       | BQ350-31       |
| 1/4"                        | BQ350-4   | BQ350-22       | BQ350-31       |
| 5/16"                       | BQ350-5   | BQ350-23       | BQ350-32       |
| 3/8"                        | BQ350-38  | BQ350-24       | BQ350-32       |
| 1/2"                        | BQ350-50  | BQ350-25       | BQ350-33       |
| 4.75                        | BQ350-3   | BQ350-21       | BQ350-31       |
| 6mm                         | BQ350-6   | BQ350-22       | BQ350-31       |
| 8mm                         | BQ350-8   | BQ350-23       | BQ350-32       |
| 10mm                        | BQ350-10  | BQ350-24       | BQ350-32       |
| Bubble & Double Flare - 37° |           |                |                |
| TUBE SIZE                   | DIE NO.   | PUNCH NO. OP.1 | PUNCH NO. OP.2 |
| 3/16"                       | BQ350-37  | BQ350-21       | BQ350-51       |
| 1/4"                        | BQ350-47  | BQ350-22       | BQ350-51       |
| 5/16"                       | BQ350-57  | BQ350-23       | BQ350-52       |
| 3/8"                        | BQ350-67  | BQ350-24       | BQ350-52       |
| 1/2"                        | BQ350-87  | BQ350-25       | BQ350-53       |
| 4.75                        | BQ350-37  | BQ350-21       | BQ350-51       |
| 6mm                         | BQ350-637 | BQ350-22       | BQ350-51       |
| 8mm                         | BQ350-837 | BQ350-23       | BQ350-52       |
| 10mm                        | BQ350-137 | BQ350-24       | BQ350-52       |
| DIN Flare                   |           |                |                |
| TUBE SIZE                   | DIE NO.   | PUNCH NO. OP.1 | PUNCH NO. OP.2 |
| 3/16"                       | BQ350-3D  | BQ350-61       |                |
| 1/4"                        | BQ350-4D  | BQ350-62       |                |



Produce professional tube flares in a matter of seconds. This highly efficient tool allows you quick profits and improved customer service.

Just dial and activate your required operation and your done! The BrakeQuip Flaring Tool has become the industry standard. It produces single and double flares to SAE and DIN standards on any light walled tubing 3/16" to 1/2".

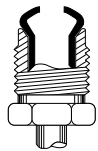
### FEATURES:

- Punch turret has OP-1\* and OP-2\*\* punches positioned side by side for efficiency.
- Cam lever operation provides speed and efficiency.
- Features automatic punch extraction.
- Smooth die channel does not mark tube.
- Comes in a rugged plastic case.

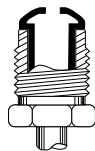
\*OP-1 = First Operation,

\*\*OP-2 = Second Operation

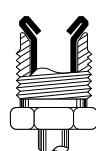
### Create these flares instantly:



SAE (Single), "Bubble"



DIN (Single), "Mushroom"



SAE/DIN (Double)

## HIGH SPEED Flaring Tool Kits

NOTE: DIN flares are found on most modern and European vehicles. Also flares annealed stainless.



**BQ350**

**BQ350** – Creates 37° and 45° single and double flares as well as DIN.

### INCLUDES:

14 die sets and 16 punches sizes 3/16" to 1/2" including all the metric sizes 4.75mm to 12.0mm.



**BQ351**

**BQ351** – Basic version that creates 45° single and double flares including DIN.

### INCLUDES:

5 die sets and 7 punches sizes 3/16", 1/4", 5/16", and 3/8" and 4.75mm.

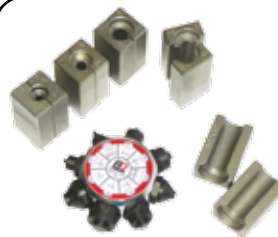


**BQ352**

**BQ352** – A 37° only kit that produces single and double flares 3/16" to 1/2".

### INCLUDES:

8 punches and 5 die sets.



### INCLUDES:

8 punches and 5 die sets. Sizes 3/16" to 1/2"

**BQ352-SP** – A 37° kit for anyone who has a Sykes Pickavant 270 series flaring tool kit.

**BQ352-BQ** – A 37° upgrade kit to suit all BrakeQuip's Flaring Kits.



## Straightens Coiled Tube...Fast

At Last...A Tool To Straighten Tube That's Economical

Easily straightens light wall tubing from 3/16" to 1/2" – simply feed your coiled tube into the straightener and it comes out straight on the other side.

- Fully adjustable
- Smooth operation (roller bearing guides)
- Vice or bracket mounted
- Can be used on all types of annealed tubing (even stainless)



**Replacement Wheel**



**BQ1028-75**

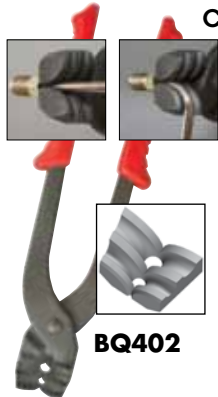
**BQ1028**

## The Handiest Tool in a Brake Mechanic's Toolbox

### Brake Tube Pliers

For use on 3/16" and 1/4" brake tube

**Convenient and Quality Crafted**

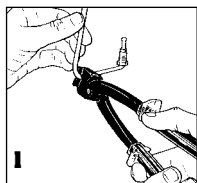


**BQ402**

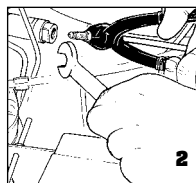
Brake mechanics often testify that this tool is the handiest tool in their tool boxes. Brake Tube Pliers are lightweight, yet strong enough for any brake job.

Brake Tube Pliers are designed to work efficiently, securely, and accurately in tight spaces, without damaging the brake tube.

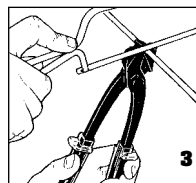
So, when the job calls for working with 3/16" or 1/4" brake tube, *Brake Tube Pliers will make life as easy as 1, 2, 3.*



**1** Brake Tube Pliers allow a tight 90° bend on the brake tube, right at the tube nut.



**2** Brake Tube Pliers allow you to align the tube nut during assembly. In addition, they grip 3/16" or 1/4" brake tube securely without damaging it.



**3** The hardened, square face on the back of Brake Tube Pliers acts as a guide to cut 3/16" or 1/4" brake tube squarely.

## Remove Frozen Bleeders Like a Pro...Easily

No more... heating up, hammering, drilling and tapping.

- Can save you a lot of time
- Pays for itself very quickly
- Works on both cast iron and aluminum



**Bleeder Buster Kit BQ2200**

It's as simple as 1, 2, 3. Works every time.

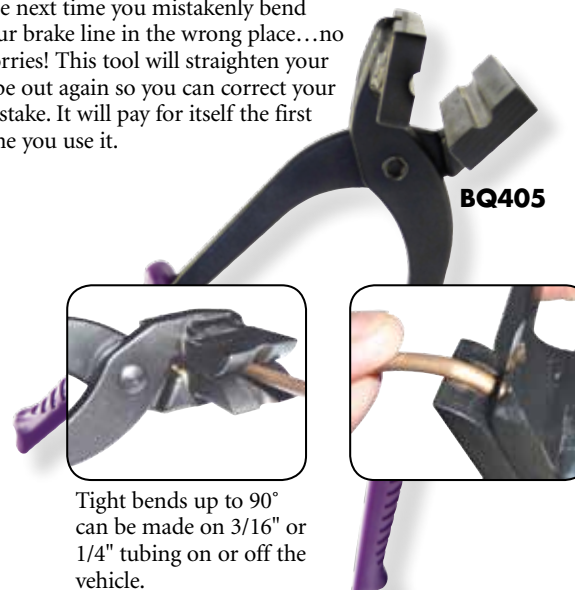
1. Place filler wire into end of bleeder and cut to length.
2. Install tool into your air chisel and shock bleeder from the top.
3. Unscrew bleed screw with conventional tool.

**How does it work?** Installing the wire plug into the bleed screw prevents the walls of the bleed screw from collapsing when removing. Applying impact to the bleed screw for about three to four seconds will compress and work harden the bleeder screw and "shock" the threads free.

**Note:** The "compressed" bleed screw will need to be replaced after removal.

## Tube Worker

The next time you mistakenly bend your brake line in the wrong place...no worries! This tool will straighten your tube out again so you can correct your mistake. It will pay for itself the first time you use it.



**BQ405**

Tight bends up to 90° can be made on 3/16" or 1/4" tubing on or off the vehicle.

- Straightens and bends 3/16" and 1/4" tube
- Straightens incorrect bends in 3/16" or 1/4" diameter tubing...even stainless steel
- Allows you to make tight radius bends up to 90° for both 3/16" or 1/4" diameter tubing
- Saves you time and money



### Professional Tube Bender

New and Improved



**NEW BQ406**

Bends 3/16" and 1/4" tubing with ease.



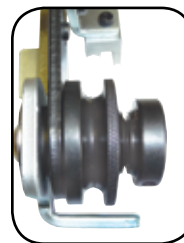
- Hand bend on vehicle or place in vise
- Smooth rollers for frictionless action
- Capable of tight radius bends up to 180°
- Only takes seconds to bend
- Easy to use

### Adjustable Tube Bender

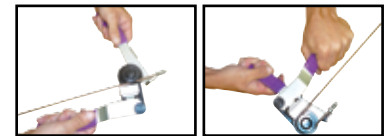
Save the cost of buying multiple size benders.



**NEW BQ613**



Adjust center channel wheel to required tube size.



- Bends all types of metal tubes 3/16", 1/4", 5/16", 3/8" and metric sizes 6mm, 8mm and 10mm.
- Bend tubes to 180° on the vehicle or use the special tab for clamping in a vise.
- Very easy to use and delivers professional results in seconds.

### Apparel T-Shirt

High quality 100% cotton  
Images on both front and back



- BQ700-S** Small
- BQ700-M** Medium
- BQ700-L** Large
- BQ700-XL** Extra Large
- BQ700-XXL** Extra Extra Large

### Cap



**BQ710**  
One Size Fits All

### Pre-fluxed Silver Brazing Rods



**BQ33**

A brazing rod for the professional brazing of steel, stainless, or brass (or any combination of these metals). Designed for brazing high pressure fittings. Convenient

pre-fluxed rod makes it a breeze to braze (no flux required). Contains no Cadmium for safe use. They come in packets of 8 rods, 18" long.

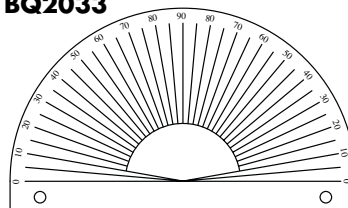
### Pre-fluxed Aluminum Brazing Rods



**BQ34**

These pre-fluxed aluminum brazing rods make the welding of aluminum tubes and fittings easy and convenient. They come in packets of 5 rods, 18" long.

### BQ2033



### Angle Gauge

Can be bench mounted. Ideal for aligning tubes and fittings.



**BQ1020**

### Banjo Blocking-Off Tool

A professional tool for blocking-off banjo fittings. Ideal for blocking-off brake hoses with banjo fittings during maintenance & trouble shooting. Copper washer sealing surfaces allows for sealing high pressures. Easy to use & reliable. Fits banjos holes 3/8" to 5/8".

## Professional Thread Identification Kit



Each gauge is available separately.

### Instantly identifies at least 99% of brake plumbing threads

- Includes popular Male & Female threads used on braking systems (16)
- Includes both Male and Female size gauging
- Includes both Metric and Imperial
- Gauge can be used to plug fluid ports
- Color coded in groups for fast selection
- All threads hardened for long life
- Comes in sturdy purple carrying case

| PART NO.       | DESCRIPTION |
|----------------|-------------|
| <b>BQ2100</b>  | Kit         |
| <b>BQ2100A</b> | 3/8 x 24NF  |
| <b>BQ2100B</b> | 7/16 x 24NS |
| <b>BQ2100C</b> | 7/16 x 20NF |
| <b>BQ2100D</b> | 1/2 x 20NF  |
| <b>BQ2100E</b> | M10 x 1.0   |
| <b>BQ2100F</b> | M10 x 1.25  |
| <b>BQ2100G</b> | M12 x 1.0   |
| <b>BQ2100H</b> | M12 x 1.5   |
| <b>BQ2100J</b> | 9/16 x 18NF |
| <b>BQ2100K</b> | 9/16 x 20NS |
| <b>BQ2100L</b> | M9 x 1.0    |
| <b>BQ2100M</b> | M10 x 1.5   |
| <b>BQ2100N</b> | M12 x 1.25  |
| <b>BQ2100P</b> | M11 x 1.25  |
| <b>BQ2100Q</b> | M14 x 1.5   |
| <b>BQ2100R</b> | 3/8 x 20BSF |

### Imperial threads found on braking systems

|               |              |            |
|---------------|--------------|------------|
| 3/8" x 24NF   | 7/16" x 24NS | M12 x 1.25 |
| 3/8" x 20BSF  | 1/2" x 20 NF |            |
| 7/16" x 20 NF | 9/16" x 18NF |            |

### Metric threads found on braking systems

|            |            |            |
|------------|------------|------------|
| M9 x 1     | M10 x 1.5  | M12 x 1.25 |
| M10 x 1    | M11 x 1.25 | M12 x 1.5  |
| M10 x 1.25 | M12 x 1    | M14 x 1.5  |

## Thread Facts

Worldwide there are only two measuring systems – Metric and Imperial. Imperial measurement is sometimes called SAE or American.

Metric systems measure the thread by the distance between two thread pitches expressed in millimeters.

**Example:** M10 x 1 = The OD of the thread is 10mm and the distance between each thread pitch is 1mm. Imperial systems measure the number of thread pitches over a one inch length.

**Example:** 7/16" x 24NS = The OD of the thread is 7/16" and the number of thread pitches over a one inch length is 24.

## Determining if the thread is Metric or Imperial.

The easiest way is to use a thread gauge. We offer a thread identification kit (BQ2100) for this purpose and covers the majority of threads that you will encounter working with brake plumbing. Another method could be to use a brake hose fitting or tube nut from which you can confirm the thread and size.

### 1. Determining the fitting OD

If a male fitting – Measure the OD of the thread. Take into account that this measurement will be slightly under the nominal size.

If a female fitting – Measure the ID of the thread. Compare this measurement at the distance between the “valleys” of opposing pitches with corresponding male fittings.

### 2. Determining the thread pitch

If it is an imperial size – Count the number of thread pitches over say 1/2" length and then multiply by 2 to get your T.P.I. (threads per inch).

If it is a metric size – Measure the distance between two thread pitches to determine the thread pitch.

## 80% of threads found on braking systems are:

|              |
|--------------|
| 3/8" x 24NF  |
| 7/16" x 24NS |
| M10 x 1      |

The two sizes most confused because they are so close in dimension are:

(A) 3/8" & 10mm. A 3/8" x 24NF thread will screw in to a M10 x 1 but a M10 x 1 will not start into a 3/8" thread. If uncertain, always go for the M10 x 1 to see if it will start in the thread.

(B) 7/16" & 11mm. The 11mm thread is extremely rare so always going for the 7/16" thread is a safe bet.

**NOTE:** It is possible to have metric on one end and imperial on the other end of the hose. The metric pitch is the same for all sizes. So, if you don't have the exact one you want, you can determine this pitch by selecting a different size metric gauge.

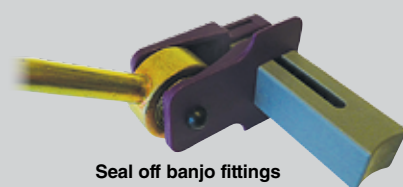
## Fluid Line Stopper Kit

4 Piece Clamp Kit

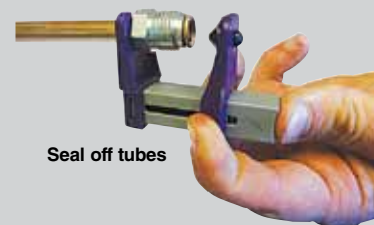
**NEW**



**BQ407**



Seal off banjo fittings



Seal off tubes

- Use to plug metal lines once disconnected 3/16" to 1/2".
- Prevents fluid leaks and contamination during service.
- Use with any automotive fluid.
- Spring loaded design installs in seconds.
- Plug Banjo fittings up to 1/2".

## BrakeQuip Programs

Add new customers and more profits to your business

### The OE Rubber Brake Hose Program

Can replicate most OE brake and clutch hoses using OE design fittings that comply with DOT standards – usually while the customer waits. Hoses can be made for any type of vehicle with hydraulic brakes – from motorcycles to industrial equipment.

### The Stainless Steel Braided Brake Hose Program

Choose from TWO Styles – OE Style fitting or Low Profile Fitting! Can replicate most OE brake and clutch hoses with stainless braided hose that complies with DOT standards – usually while the customer waits.

### The Metal Tube Program

Duplicate any automotive metal tube instantly and profitably using the BrakeQuip EziBend tube and the BrakeQuip high speed flaring tool. Tubes can be made while the customer waits.

### The Power Steering Program

Repair automotive power steering hoses using the highest OEM quality hose available. Choose braze on or compression fittings and hose that incorporate noise resistant technology.

### Fuel Line Program

Repair or replace fuel lines for virtually all vehicles in minutes. No special tools required.

### The BrakeQuip Tool Program

BrakeQuip offers a range of unique speciality tools that are highly productive for the automotive plumbing professional.

### Specialty Fitting Program

The one stop shop for automotive fittings including metric and hard to get fittings. Custom made fittings available. A full range of assortment kits makes sure you have your fitting on hand.





# Automotive Hose Manufacturing Systems

**Make your own legal brake hoses**

Systems available to suit all budgets from using your shop press to high volume semi-automatics. Available in selected areas.

## Crimping Machines Supported

| BRAND            | MODEL                |
|------------------|----------------------|
| Aeroquip         | FT1380               |
| Aeroquip         | FT1330               |
| Custom           | D100                 |
| Custom           | D200                 |
| Custom           | CC30                 |
| Custom           | CC60                 |
| Dayco            | NP60                 |
| Dayco            | D260                 |
| Finnpower        | P20                  |
| Finnpower        | P32                  |
| Gates            | 707                  |
| Gates            | GC32                 |
| Goodyear         | PC400                |
| Imperial Eastman | K16                  |
| Manuli           | MB137, 204, 240, 340 |
| Techmaflex       | PE28, 32, 38, 50     |
| Parker           | KarryKrimp           |
| Parker           | ParKrimp             |
| UniFlex          | PB239                |
| UniFlex          | HM10.3               |
| Weatherhead      | T400                 |

*Crimps and Tests Automotive Hoses*



### BQ1005 Professional Series

Combines an all-in-one crimping system and a built-in brake hose tester.



### BQ4000 Series

For people who already have a crimping machine.



### BQ3000 Series

For the person who has a shop press and only needs to do low volume.



### BQ1013A

Air/Hydraulic high speed brake hose tester. Tests hose to 3,000 psi in 30 seconds.



Learn more about the **BrakeQuip** concept  
<http://www.brakequip.com/movie>

Call now and find out if you are eligible to become a BrakeQuip dealer.



3143 Regal Drive, Alcoa, TN 37701 (USA)

E-MAIL  
[info@brakequip.com](mailto:info@brakequip.com)

WEB  
[www.brakequip.com](http://www.brakequip.com)

PHONE  
 865-251-9193

FAX  
 865-251-9192

Your BrakeQuip dealer is: